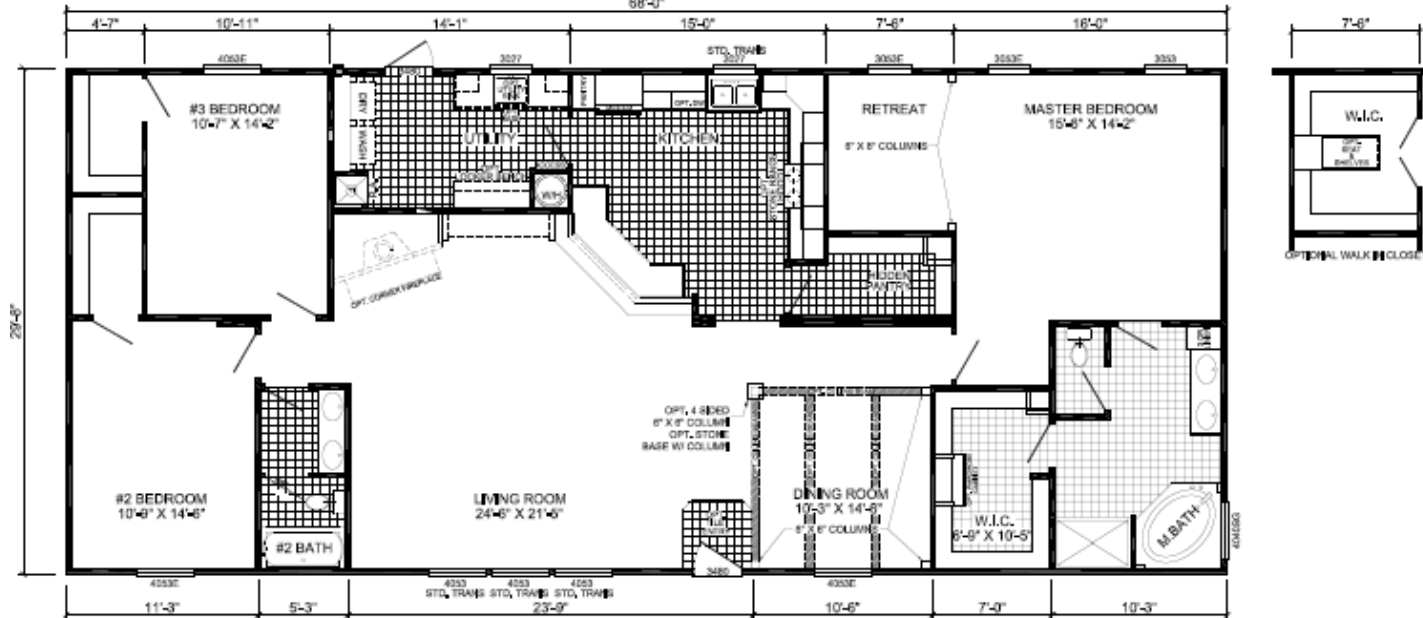


# ULTIMATE



**U-3683B**  
**3-BEDROOM / 2-BATH**  
**32 X 72 - Approx. 2027 Sq. Ft.**

Date: 2/12/10  
 \* All room dimensions include closets and square footage figures are approximate.  
 \* Transom Windows are available on optional 5'4" slider windows only.  
 \* Available with L-beads or Shutters around windows.